

## < Common Buzzard >

The size length is 50cm to 60cm.

The female one is larger than male in size.

It has a mottled pattern of brown and white on the whole body.

## < False lily of the valley >

The origin of the name is that the shape of the leaf resembles the movement of the wing of the crane while courting love.

It makes flowers bloom around May.



## Summary

- We were able to find field signs such as manchurian walnuts and claw marks from bears and squirrels.
- We want to investigate the field signs from different seasons to learn more about the animals in the Kudoji mountains.



## plants and animals around the Kudoji mountains

Hirosaki Minami  
High School

13 HR group 4  
Member

# Purpose

Our aim is to know the animals and plants living around Kudoji mountains.

# Motivation

Because we were interested in what kind of animals and plants live in Kudoji mountains.

# Result

Many animals and plants are inhabiting in Kudoji mountains.

## < Manchurian walnuts >

They are deciduous trees grown in slightly moist spots. Squirrels and Mice eat their fruits. They use their teeth to cut it open and eat the contents.

\* cut it in half along the middle line with their teeth.



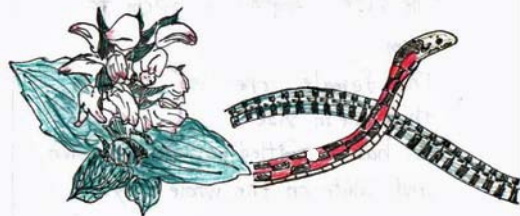
## < Ginkgo tree >

Deciduous trees native to China. People in temples planted one. Its seed is called Ginkgo.



## < Good yere falisa var. laevis >

It's seven to ten cm tall. We went to Kudoji mountains in August. Then it was still in bud.



## < Tiger killback >

It lives in paddy fields or swamps. It has a poison ten times as strong as Hub. And poison three times as strong as pit viper. It lives in "Danburi pond" in Kudoji.

## < Marten >

It lives in a coniferous forest. It is omnivorous. It eats "Manchurian walnuts" in the Kudoji mountains.

