

Intertidal zone

creatures



HIROSAKI

MINAMI

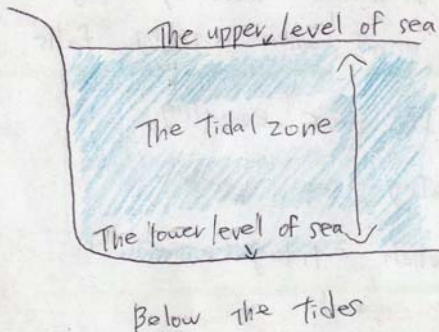
16HR  
Member

Group 4

Intertidal zone?

The area of beach which is made by the rise and fall of the seas.

The cross section of sea  
Above the tides



Summary

The creatures living in the Intertidal zone have remarkable features!!



## 1 Motive

We want to search the features of creatures living rocky shore made by the tides coming and going.

## 2 Hypothesis

We think that there is a big difference between crabs shellfish living in rocky shore and those living in other places.

## 3 Investigation result

Crab

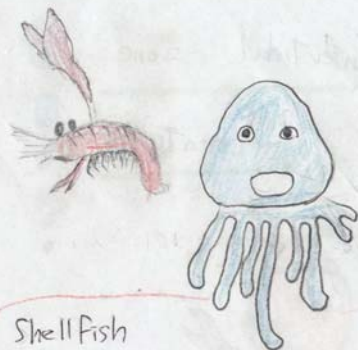
① Yodakaoagai lives in the reef of the Intertidal zone.

② Yukinogasei

Shell about 1.5 cm x 1 cm  
about 0.7 cm

It doesn't move by using sucker arms when tiding falls.

It moves crawling.  
eating sea weeds.  
when tiding rises.



Shellfish

① Motuzugani

- Shell about 7~8 cm
- It is a b kind of shell among living the river
- It grows to the weight of 180g
- Its feature is that scissor-like leg has bristles
- another name Tebukurogani is called.