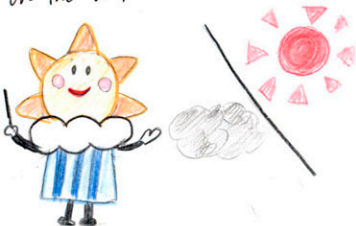


How to predict the weather

In Japan many AMeDAS are settled. AMeDAS is the meteorological observation System.

It measures the rainfall, temperature, wind velocity, and hours of daylight.

Certified weather forecasters predict the weather based on the data from AMeDAS.



Earthquake, volcano, tidal wave

Three active volcanos in Aomori

Mt. Hakkoda

Mt. Iwaki

Mt. Osore



Let's know about Weather

Hirosaki Minami High School



IIHR Group 9
Members

Motivation

- We had an interest in an old person's way of living.
- We want to know about the abnormal weather in Aomori.
- We had an interest about fine proverbs.

There are Japanese proverbs

- ▷ It rains when the swallows fly low.
- ▷ If we see sunrise, it will be rainy.
- ▷ If we see a rainbow in the evening, it will be sunny tomorrow



Global warming

Weather and the lives of old people

Predicting the weather from natural phenomena and the like has been happening since long ago.

There is an impact on Aomori prefecture by global warming.

Apple coloring becomes worse by global warming. In addition, if global warming progresses, apples will be grown elsewhere instead of Aomori.

There is an increasing possibility that the apple industry will move to Hokkaido.

Rain and Temperature Graph of Aomori

