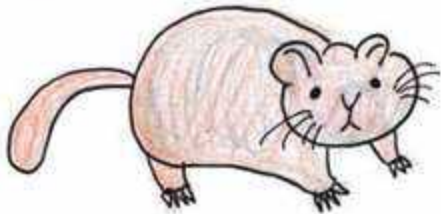


About animals and plants

- Special natural treasure (animals protected by the country)
 - The Japanese serow
 - The Japanese monkey
 - Natural treasure (animals designated by the country)
 - golden eagle
 - asian black bear
 - black woodpecker
 - japanese dormouse etc.
 - Red list (animals that will go extinct in the future)
 - asian black bear
 - japanese river otter etc.
- ➔ Recently, animal of special natural treasure and Red list are increasing.



Summary

Animals and plants are decreasing because of manners of people and global warming in Shirakami Mountains.

Picking up trash and examination of the ecosystem are being conducted now.

We want to wrestle with energy saving.

reference

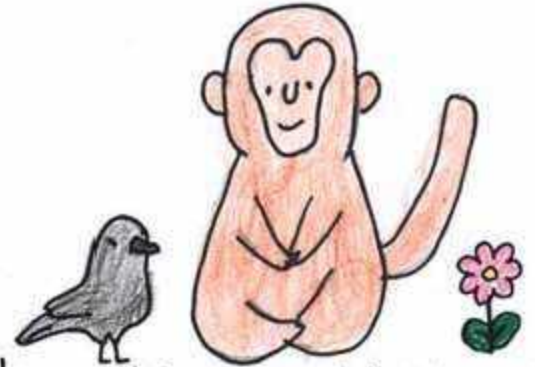
<https://manabi-japan.jp>

<https://www.hirosaki-u.ac.jp>

<https://tabi-labo.com>

<https://bisuikan.co.jp>

The present situation of Shirakami mountains and the problem.



Hirosaki minami high school

13HR Group 3

Member

2016	Daiki	Shimizu
2016	Yuki	Yamamoto
2016	Yuma	Yamamoto
2016	Yuma	Yamamoto

Motive

We are interested in the closet World Heritage Site, the Shirakami Mountains.

Purpose

We would like people to know about the Shirakami Mountains and its problems.

About Shirakami Mountains

- Stretching across the border between the southwestern part of Aomori and the northern part of Akita prefectures.
- There are broad-leaved forests, most notably a large stretch of Japanese beech forest.
- Registered as a World Natural Heritage Site in 1993.



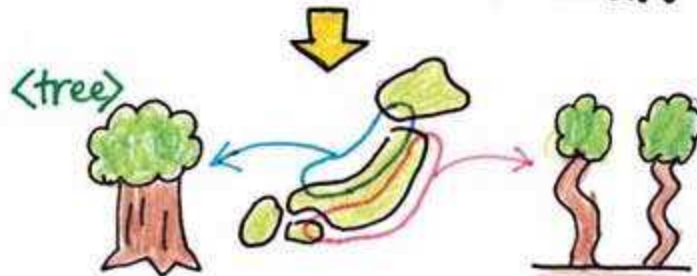
About Beech

Beech family → Beech → Beech
scientific name of beech: *Fagus crenata blume*

crenata → circular sawtooth
Inhabit from northern Hokkaido to
Osami Peninsula in Kyushu

Live 200 to 250 years!!

Features differ between areas with a lot of snow on the sea of Japan side and areas with little snow on the Pacific side



- withstand the weight of snow
- ↳ Thick and straight
- No need to withstand the weight of snow
- ↳ Narrow and grows gently



About animals and plants

Currently, the animals and plants in the Shirakami Mountains are decreasing. There are two reasons.

- 1 Deterioration of human manners.
 - Littering of garbage
 - giving wild animals their food



The environment and ecosystem are devastated

- 2 Temperature change
 - 0.5°C higher than 100 years ago
 - Expected increase of 6.4°C over the next 10 years



Q Extinction of Forest

What is the origin of the name of Shirakami Mountains? 🤔

A In Ainu, it called shira kamui from the rock was called "Shirah" and the god was called "kamui".