

Dolphin

- The dolphins are about 1,3 to 10 meters long and weigh 30 to 300 kilograms.
- They are a rare species of marine life because they breathe with lungs.
- The brain is divided into left and right parts, but one part of the brain is always awake to be alert of its surroundings with one open eye and to allow immediate action in an emergency.



Summary

The sea creatures are suffering from marine pollution.

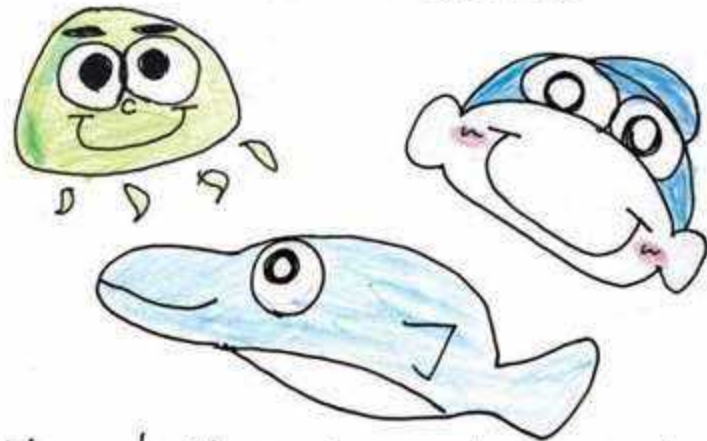
What we can do is pick up the trash near the ocean or throw it away.

And by doing that, we can stop the ocean pollution from getting worse one life is saved just by trying.



Under the Sea

~ marine creatures ~



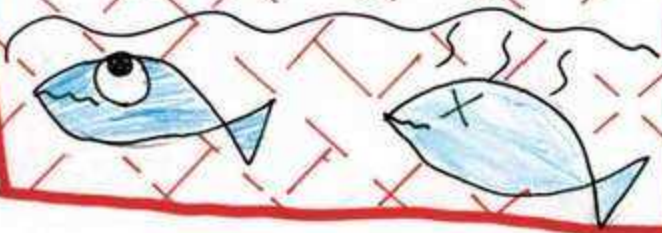
Hirosaki Minami junior high school
14 HR 9 team

Shi Yashiro

Shi Yashiro

The purpose

Reduce marine life suffering from marine pollution caused by human life.



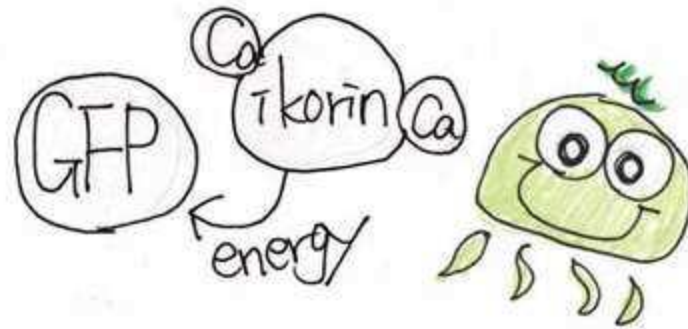
Task

Let everyone know about the characteristics of marine life to prevent pollution.

Owan jellyfish

The oriental jellyfish have a green fluorescent protein.

GFP works in pairs with a protein called ikorin, which receives light and shines blue. Specifically, it first absorbs energy and then receives the emitted blue fluorescence to glow green.



Whale shark

The world's largest fish of temperate to tropical coastal and open seas.

There are images of "human eating sharks" and "violent fish", but the whale shark is a very quiet fish that eats mainly small crustaceans and does not attack people.

