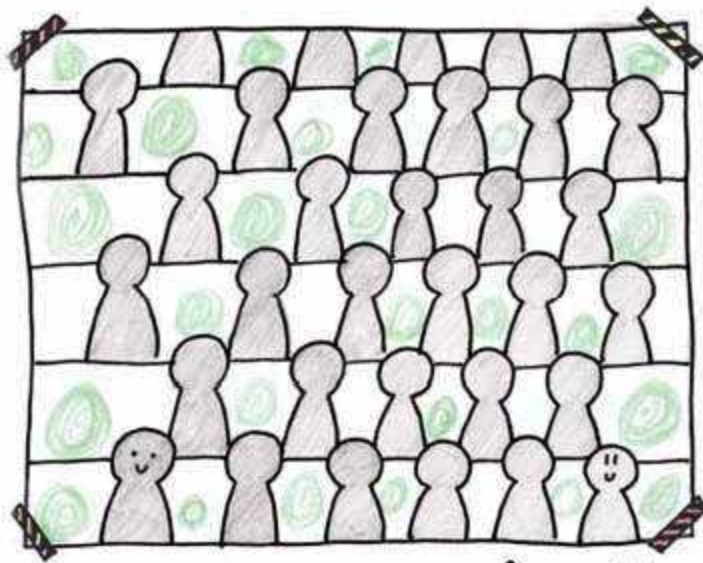


Kudoji's history

- Kudoji is a Shingon Buddhist temple.
- Kudoji was built between 782 and 806.
- Kudoji was built in Aiyara yama.



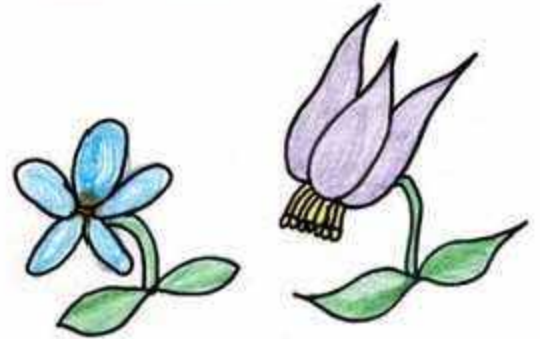
- These are images of Buddha of farmers with their name.
- The top of the image of Buddha is the farmer's leader.

Result

- Many plants and animals live in Kudoji.

* Source is Wikipedia.

Kudoji's ——— ——— Ecosystem



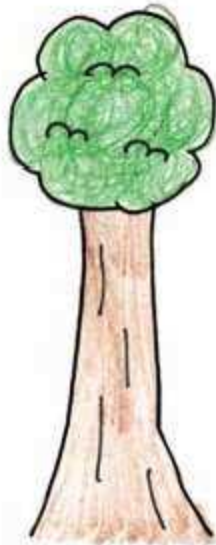
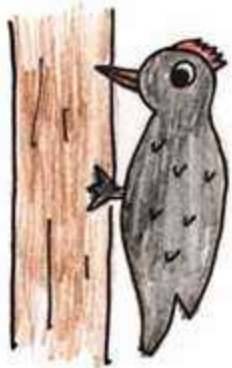
Hirosaki Minami

16HR Group 4



Purpose

- To research about animals and plants in Kudoji.
- To research about the history of Kudoji.



Plants around Kudoji

1 SHIRANEAOI

- This flower is named Shiraneaoi because it is similar to Tachiaoi.
- Ranunculaceae and Gelucidium.

2 KATAKURI

- It is distributed over Hokkaido and Kyushu in Japan.
- Lilliaceae avalanchelily.

3 SUGI

- The tree is named Sugi because the tree becomes straight.
- This conifer is a cypress and cedar.

Animals around Kudoji

2 KUMAGERA

- This animal inhabits the beech forest mainly.
- This animal makes a circular hole in a beech.

2 NIHONN KAMOSIKA

- This animal has been designated a national monument.

3 NIHONN TUKINOWAGUMA

- Mammals of the bear family bear genus.
- This animal has a design of the crescent on a chest.