

## The structure of scallops

**Mantle**: The mantle is the organ that forms the shell. The mantle's job is to make the shell and decide the direction to swim.

**Heart**: Their heart is between the adductor muscle and the digestive gland.

**Eye**: There are 2 eyes around the mantle. Scallops have a hundred degree field of view.

**Foot**: There is a foot in the gonad near the midgut gland.

**Lip**: A brown soft organ next to the midgut glands collects food and puts it into mouth.

## Summary

Aomori Prefecture scallops are cultivated throughout the year. Changing the tools, such as nets, used every season Aomori is able to produce a lot of healthy scallops because it works carefully.

## Postscript

We learned a lot about the fishery industry in Aomori Prefecture. We would also like it to be a big thing that can be boasted about nationwide, unlike scallops, so it was fun to study.

## Source

Aomori Prefecture web site  
<http://www.aomori.tomoya.co.jp>  
Fisheries Research Institute

# Scallop farming



16HR

Group 9

- Language
- English
- Math
- Science

Hirosaki Minami High School

## Motive and Purpose

### Motive

Scallops are a special product of Aomori Prefecture, but we don't know about it at all.

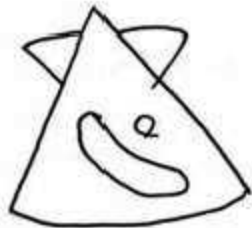
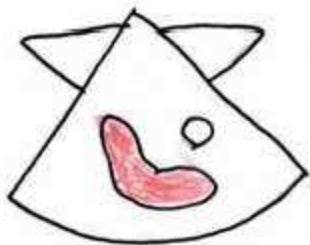
### Purpose

We examined the scallop's characteristics and we want to tell everyone about them.

### Difference colors of scallop gonads

a male

2 female



## About scallop farming

In Aomori City, scallop farming is carried out in most of the waters several kilometers off the coast, accounting for around 90% of the city's coastal fishery production and landings.

Scallop farming begins in April and May by putting seeding containers with nets in onion bags into the sea. In Matsu Bay at this time the scallop larvae float in the whole area, and this adheres to the seeding device. From July to August, when the attached scallop grow to about 1 cm, they will be recovered from the seeding harvester.

4 5 6 7 8 9 10 11 12 1 2 3

